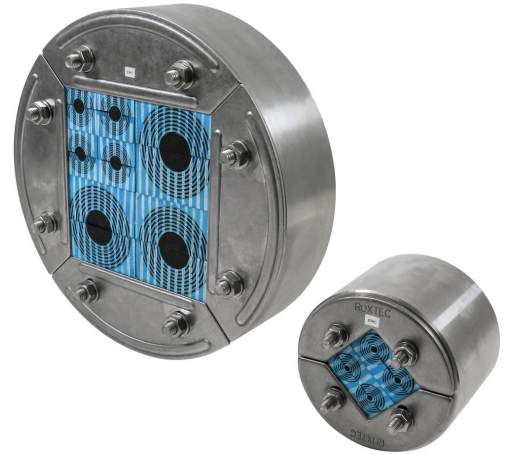




Roxtec R EMC transit with SL R

Round EMC transit for welding when sealing multiple cable and pipes in a limited area.

The Roxtec R EMC with SL R sleeve is a cable and pipe transit ensuring electromagnetic compatibility. The transit frame is designed to be installed into SL R sleeves. The compression is integrated in the frame and seals by expansion. There is a choice between Roxtec ES modules for electromagnetic shielding and PE modules that protect against conducted disturbances. The modules adapt to cables and pipes of different sizes, and can be used to build in spare capacity in the transit. The SL R sleeve is welded to the structure. Roxtec EC (electrical continuity) test sticks are available to help indicate the electrical performance of the transit installation.



- Area efficient
- Easy to maintain and inspect

Product characteristics



Fire rated



Watertight



Gas-tight



EMI protection

Structure of installation



Metal

Mounting type



Welding

Ratings & certificates

Fire

- A-CLASS according to IMO 2010 FTP Code
- H-CLASS according to IMO 2010 FTP Code + HC fire load curve

Tightness

- Gas: 2.5 bar (catastrophic)
- Water: 4 bar (catastrophic)

Supports

- Electromagnetic shielding
- Potential equalization

Frame dimensions

mm/kg

The frame variants below are a limited selection. For the full range of frames and configurations, please visit [roxtec.com](https://www.roxtec.com).

Product	Packing space	Aperture dimensions Ø	Weight	Art. no
R 75 EMC AISI316	40 x 40	75 - 77	0.5	ER00A00751121
R 100 EMC AISI316	60 x 60	100 - 102	0.8	ER00A01001121
R 125 EMC AISI316	80 x 80	125 - 127	1	5ER0000004913
R 127 EMC AISI316	80 x 80	127 - 129	1	ER00A01271121
R 150 EMC AISI316	90 x 90	150 - 152	1.7	ER00A01501121
R 70 EMC AISI316	40 x 40	70 - 72	0.46	ER00A00701121
R 200 EMC AISI316	120 x 120	200 - 202	2.7	ER00A02001121

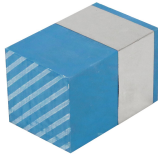


Sealing components

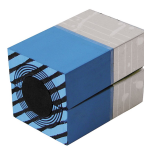
Sealing components



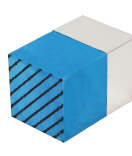
RM ES module with
Multidiameter™



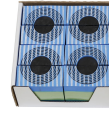
RM ES solid compensation
module



RM PE module with
Multidiameter™



RM PE solid compensation
module



R ES sealing kit



Accessories ES and BG



Lubricant



SL R sleeve

For detailed information, please visit [roxtec.com](https://www.roxtec.com).

The product information provided by Roxtec does not release the purchaser of the Roxtec system, or part thereof, from the obligation to independently determine the suitability of the products for the intended process, installation and/or use.

Roxtec gives no guarantee for the Roxtec system or any part thereof and assumes no liability for any loss or damage whatsoever, whether direct, indirect, consequential, loss of profit or otherwise, occurred or caused by the Roxtec systems or installations containing components not manufactured by an authorized manufacturer and/or occurred or caused by the use of the Roxtec system in a manner or for an application other than for which the Roxtec system was designed or intended.

Roxtec expressly excludes any implied warranties of merchantability and fitness for a particular purpose and all other express or implied representations and warranties provided by statute or common law. User determines suitability of the Roxtec system for intended use and assumes all risk and liability in connection therewith. In no event shall Roxtec be liable for indirect, consequential, punitive, special, exemplary or incidental damages or losses.

The Roxtec products are offered and sold in accordance with the conditions of the Roxtec General Terms of Sales. The latest version of the Roxtec General Terms of Sales can be downloaded from <https://www.roxtec.com/en/about-us/about-roxtec/general-terms-of-sales/>

We reserve the right to make changes to the product and technical information without further notice. Any errors in print or entry are no claims for indemnity. The content of this publication is the property of Roxtec International AB and is protected by copyright.

This document was generated on: 2024-05-03